

Features

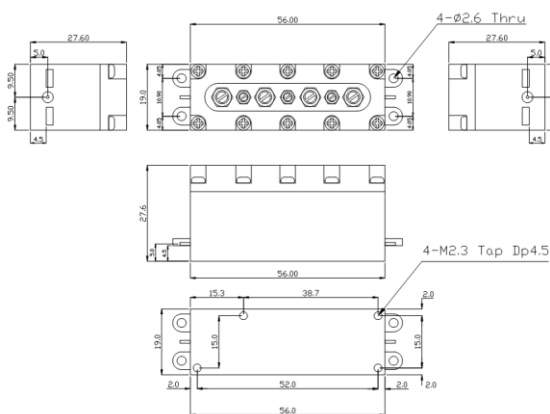
- Pin Type Cavity Band Pass Filter.
- Very compact size and low weight
- Typical 0.4 dB Insertion Loss



Specifications

Parameter	Specifications	Remarks
Frequency Range	2,220 ~ 2,486.5 MHz	BW : 266.5 MHz
Center Frequency	2,353.25 MHz	
Insertion Loss (Max.)	1.0 dB	
Pass Band Ripple (Max.)	0.2 dB	
Return Loss (Min.)	18 dB	
Rejection (Min.)	70 dB @ 3,603.25 MHz	
In/Out Impedance	50 Ω	
Handling Power (Max.)	CW 40 W	
Operating Temperature	-40 °C ~ +85 °C	
Dimensions	56 * 19 * 27.6 mm	Excluding Connectors
Connector	Pin Type	

Outline drawing



Typical Response

